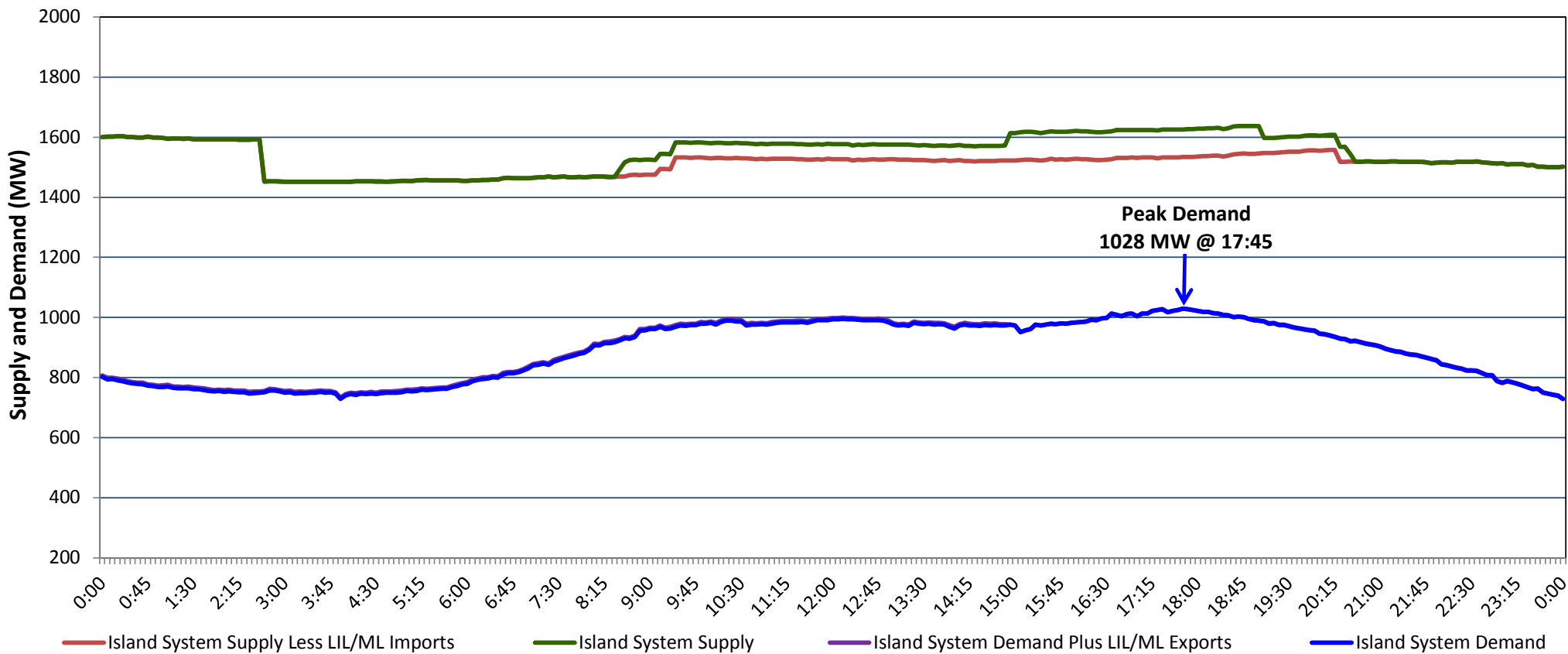


Newfoundland Labrador Hydro (NLH)
Supply and Demand Status Report Filed Monday, November 05, 2018

Section 1
Island Interconnected System Supply, Demand & Exports
Actual 24 Hour System Performance For Saturday, November 03, 2018



Supply Notes For November 03, 2018

1,2

- AAs of 1623 hours, September 28, 2018, Holyrood Unit 3 unavailable due to planned outage 110 MW (150 MW).
- BAs of 1155 hours, October 22, 2018, Upper Salmon Unit unavailable due to planned outage (84 MW).
- CAs of 1500 hours, October 26, 2018, Stephenville Gas Turbine available at 25 MW (50 MW).
- DAs of 0637 hours, November 01, 2018, Hardwoods Gas Turbine unavailable (50 MW).
- EAt 0239 hours, November 03, 2018, Holyrood Unit 1 unavailable 140 MW (170 MW).
- FAt 0922 hours, November 03, 2018, Holyrood Unit 1 available at 40 MW (170 MW).
- GAt 2017 hours, November 03, 2018, Holyrood Unit 1 unavailable due to planned outage 40 MW (170 MW).

Section 2
Island Interconnected Supply and Demand

Sun, Nov 04, 2018	Island System Outlook ³			Seven-Day Forecast	Temperature (°C)		Island System Daily Peak Demand (MW)	
					Morning	Evening	Forecast	Adjusted ⁷
Available Island System Supply: ⁵	1,565	MW		Sunday, November 04, 2018	10	4	1,140	1,047
NLH Island Generation: ⁴	1,265	MW		Monday, November 05, 2018	3	2	1,215	1,121
NLH Island Power Purchases: ⁶	100	MW		Tuesday, November 06, 2018	1	3	1,210	1,116
Other Island Generation:	200	MW		Wednesday, November 07, 2018	8	9	1,095	1,002
ML/LIL Imports:	-	MW		Thursday, November 08, 2018	6	5	1,180	1,086
Current St. John's Temperature & Windchill: 10 °C	N/A	°C		Friday, November 09, 2018	3	4	1,180	1,086
7-Day Island Peak Demand Forecast:	1,215	MW		Saturday, November 10, 2018	4	4	1,130	1,037

Supply Notes For November 04, 2018

3

- HAt 0745 hours, November 04, 2018, Hardwoods Gas Turbine available (50 MW).

- Notes:
1. Generation outages for running and corrective maintenance are included. These are not unusual for power system operations. They generally do not impact customer supply. The power system operators schedule outages to system equipment whenever possible to coincide with periods when customer demands are low and sufficient supply reserves are available. However, from time to time equipment outages are necessary and reserves may be impacted.
2. Due to the Island System having no synchronous connections to the larger North American grid, when there is a sudden loss of large generating units some customer's load must be interrupted for short periods to bring generation output equal to customer demand. This automatic action of power system protection, referred to as under frequency load shedding, is necessary to ensure the integrity and reliability of system equipment. Under frequency events typically occur 5 to 8 times per year on the Island Interconnected System and the resultant customer load interruptions are generally less than 30 minutes.
3. As of 0800 Hours.
4. Gross output including station service at Holyrood (24.5 MW) and improved NLH hydraulic output due to water levels (35 MW).
5. Gross output from all Island sources (including Note 4).
6. NLH Island Power Purchases include: CBPP Co-Gen, Nalcor Exploits, Rattle Brook, Star Lake, Wind Generation and capacity assistance (when applicable).
7. Adjusted for curtailable load, market activities and the impact of voltage reduction when applicable.

Section 3
Island Peak Demand Information
Previous Day Actual Peak and Current Day Forecast Peak

Sat, Nov 03, 2018	Actual Island Peak Demand ⁸	17:45	1,028 MW
Sun, Nov 04, 2018	Forecast Island Peak Demand		1,140 MW

- Notes:
8. Island Demand / LIL / ML Exports (where applicable) is supplied by NLH generation and purchases, plus generation owned and operated by Newfoundland Power and Corner Brook Pulp & Paper (Deer Lake Power, DLP).